

# THE NORTH-WEST EUROPE GAS REPORT

SEPTEMBER 2011 Edition



**Pöry, established experts in the European energy markets, are pleased to announce their latest offering to the industry.**

The gas markets in North-West Europe (NWE) have undergone significant changes in the last few years. Indigenous supplies, especially in Great Britain, are in decline but significant new infrastructure has been built to bring gas from around the world. New gas storage facilities have been built, or are planned, and improved interconnection between countries in NWE means there are many new alternatives to provide the flexibility traditionally provided by Groningen and UKCS swing fields.

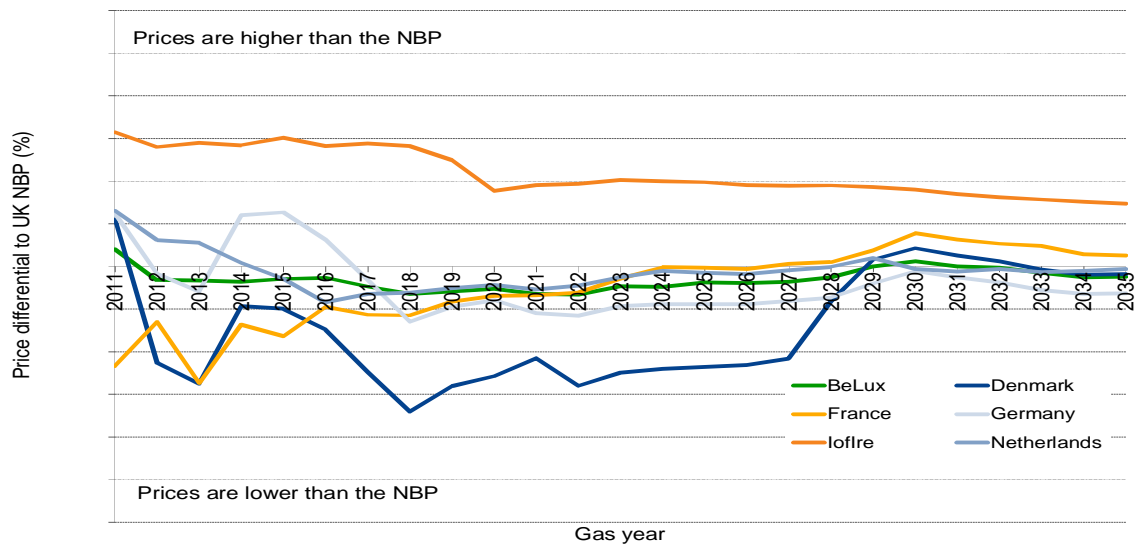
This updated report from Pöry looks at all the major gas price drivers for the region as a whole and the countries within it (**GB, Germany, the Netherlands, France, Belgium, island of Ireland, and Denmark**). The report is invaluable for anyone wishing to gain a better understanding of this vitally important region and its interface with the wider global gas market.

We provide detailed analysis of some of the most difficult questions facing market players today and more within this report. We consider how prices may develop under three different scenarios and provide price projections for all years until 2035.

Some of the questions analysed include:

- How does the disaster at Fukushima affect gas demand now and in the future?
- Is there sufficient LNG to meet demand from the Far-East and spot cargoes for Europe?
- What role will gas play in the transition to a low carbon world?
- Will the production of shale gas in Europe match the success in the US?
- What impact will wind intermittency have on gas demand?
- How much storage is needed in the future - and of what type?
- How is gas trading developing across the countries in NWE?
- How does European energy policy affect gas markets?
- What gas prices can we expect in each market under different scenarios?

## Sample NWE gas hub variances compared to the NBP in Great Britain



Underpinning the analysis is Pöyry's custom-built worldwide gas model – Pegasus. The model, developed in-house, covers not only NWE but also the rest of Europe, North America, and the LNG demand from the Far-East and rest of the world.

Solutions are obtained through the use of linear programming, making Pegasus a powerful tool which can be scaled and adapted to analyse a variety of problems.

Pöyry also has a gas storage valuation tool known as Maelstrom. This allows all types of gas storage facility to be modelled, taking into account the influence of injection and withdrawal rates as well as levels of volatility on storage value.

Maelstrom and Pegasus are just a selection of a suite of analytical tools that enables Pöyry to create bespoke solutions to meet the exact requirements of clients.

### Contact Pöyry for more information:

- Richard Sarsfield-Hall  
[richard.sarsfieldhall@poyry.com](mailto:richard.sarsfieldhall@poyry.com)
- Martin Winter  
[martin.winter@poyry.com](mailto:martin.winter@poyry.com)
- Call us on +44 (0)1865 722660 or
- Visit our website at [www.ilexenergy.com](http://www.ilexenergy.com)

### ILEX Energy Reports

Pöyry produces ILEX Energy Reports for electricity, gas, carbon and green certificate markets across Europe.

Pöyry is Europe's leading energy consultancy, providing strategic, commercial, regulatory and policy advice to the energy market.

Our energy team of 200 specialists, located across 14 European offices in 12 countries, offers unparalleled expertise in the rapidly changing energy sector.

